

# your PR.i.VATES

Testicular cancer awareness, advice and support for men in the UK affected by testicular cancer.

## Chemotherapy for non localized/high risk disease



ORCHID   
FIGHTING MALE CANCER

[www.yourprivates.org.uk](http://www.yourprivates.org.uk)

# Chemotherapy for non localized/high risk disease

Chemotherapy is the use of anti-cancer (cytotoxic) drugs to destroy cancer cells. They work by disrupting the growth of cancer cells as they circulate in the blood and can reach cancer cells all over the body. The drugs most commonly used to treat testicular cancer are Cisplatin, Etoposide and Bleomycin. A combination of all three is a treatment known as BEP.

BEP chemotherapy can be given as outpatient treatment, day patient or during a short stay in hospital. Blood tests will usually need to be performed prior to BEP to check that your immune system is healthy enough to cope with the treatment.

A Breathing test called a lung function test will be done to ensure the lungs are functioning well.

Older men or those with medical problems such as breathing difficulties may be offered slightly different treatment regimes.

A drip will be sited into a vein in your hand, arm or neck and the chemotherapy administered through it.

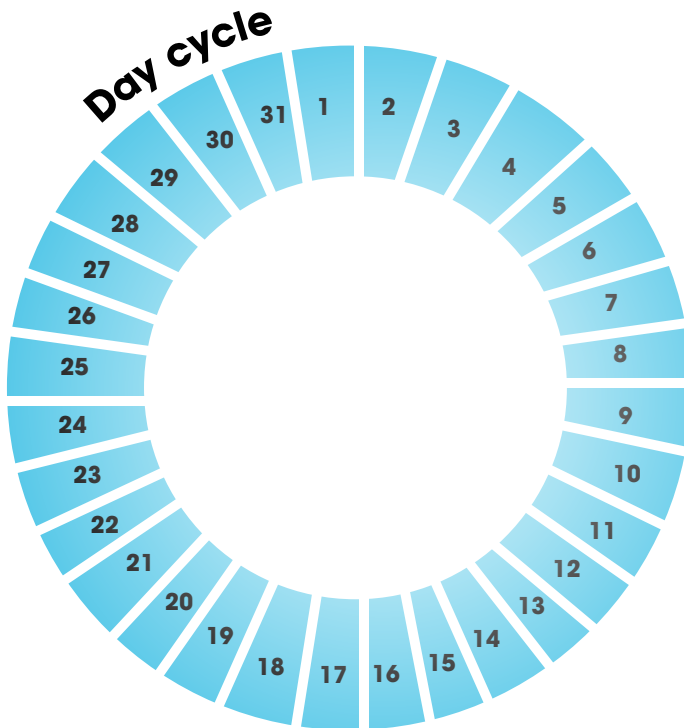
Anti-sickness (antiemetic), drugs can be given to you through these tubes as well.

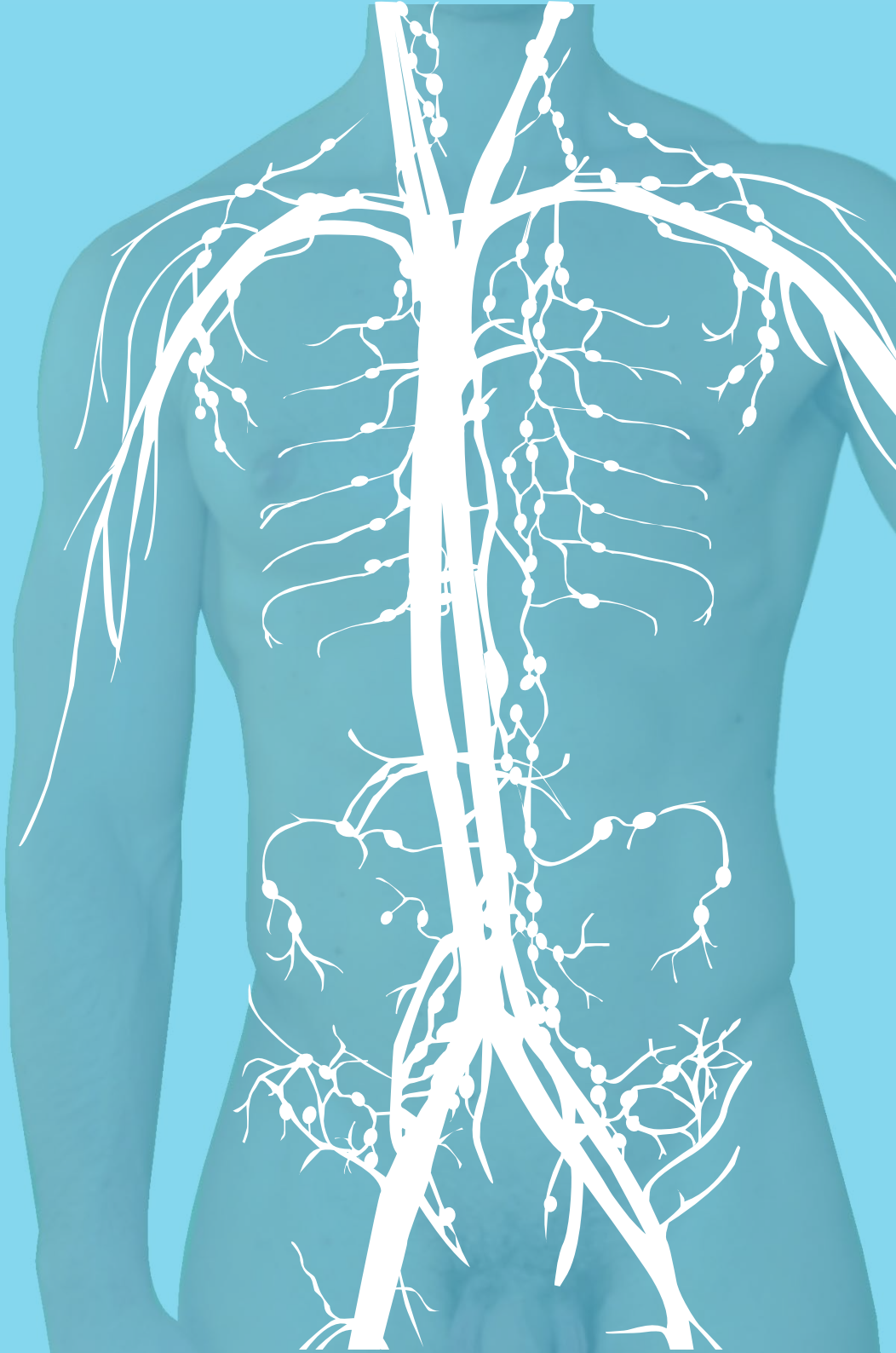
BEP chemotherapy can be given in different ways and the exact duration of your treatment will be decided by your oncologist. It can be given as a regime over three days or five days on an inpatient or outpatient basis. The treatment regime is also known as a cycle. Each cycle of treatment is given over 3 weeks. 3 or 4 cycles of BEP chemotherapy are given depending on the extent of the disease.

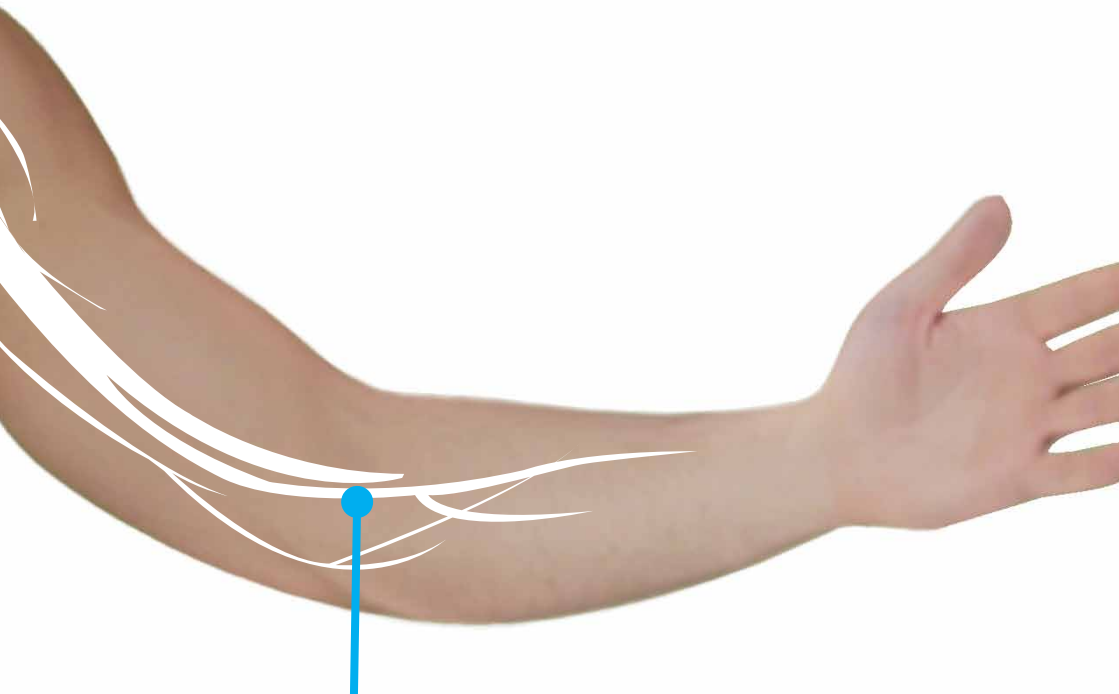
Men who had high tumour markers or more widespread disease may be offered higher or different doses of chemotherapy.

# BEP chemotherapy regime

<b>One cycle 3 Day BEP</b> (3-4 cycles over 2-3 months)	<b>One cycle 5 Day BP</b> (3-4 cycles over 2-3 months)
<b>Day 1</b> Infusion of all BEP drugs	<b>Day 1</b> Etoposide and Cisplatin
<b>Day 2</b> Infusion of all BEP drugs	<b>Day 2</b> All BEP drugs
<b>Day 3</b> Etoposide only	<b>Day 3</b> Etoposide and Cisplatin
<b>Day 8</b> Bleomycin	<b>Day 4</b> Etoposide and Cisplatin
<b>Day 15</b> Bleomycin,	<b>Day 5</b> Etoposide and Cisplatin
<b>Break</b>	<b>Day 15</b> Bleomycin
	<b>Break</b>







## **BEP chemotherapy**

**A drip will be sited into a vein in your hand, arm or neck and the chemotherapy administered through it. Anti-sickness (antiemetic), drugs can be given to you through these tubes as well.**